

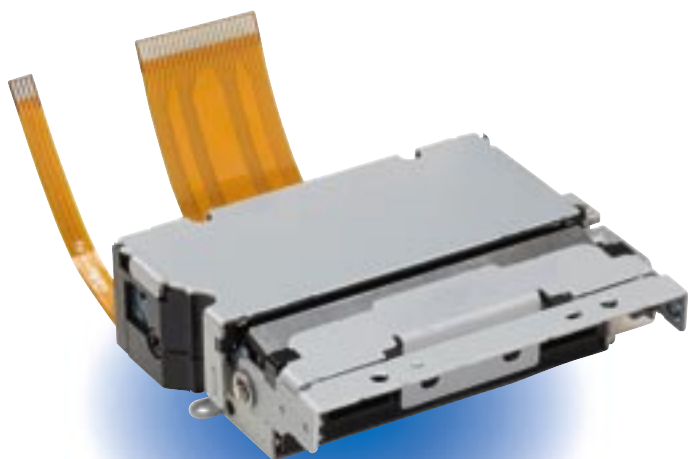
CAP Series

CAPG247

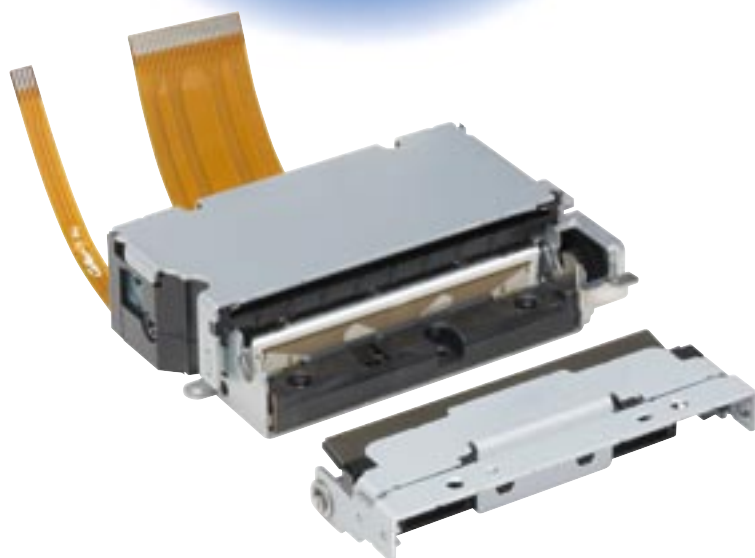
CAPG247 is a new 24V thermal line dot printer with a built-in autocutter unit, which enlarges our "Easy-Paper-Operation" product line.

The CAPG247 combines high printing speed of 100 mm/s together with a long lifetime for both printer and autocutter unit in a very compact design. It allows for a variety of 24V applications, above all in the POS/ECR market.

- Very compact 24V 2" mechanism
- "Easy-Paper-Operation" with latch function
- Built-in autocutter unit
- High speed printing (100 mm/s)
- High durability of printer (100 km) and cutter (1 million cuts)



CAPG247



Model		CAPG247
Printing	Method	Thermal dot line system
	No. of dots per line	432
	Resolution (dots/mm)	8
	Print width (mm)	54
	Paper width (mm)	58
	Paper feed pitch (mm)	0,125
Speed max (mm/s)	150	
Detection	Head temperature	By thermistor
	Out of paper detection	By photo interrupter
	Platen position detection	By mechanical switch
	Cutter home position detection	By mechanical switch
Power supply	Operation voltage (Vdd)	5V +/- 5%
	Operation voltage (Vp)	24V +/-10%
Peak current	Head	5.2A (288 dots)
	Motor	0.4A
	Cutter	0.5A
Service Life	Pulse activation	100 million pulses
	Abrasion resistance	100 km or more
	Cutter	1 million cuts
Operating temperature	0°C to 50°C	
Storage temperature	-20°C to +60°C	
Dimensions (W x D x H in mm)	80.5 x 65.0 x 22.2	
Weight	Approx. 180 g	
Cutting method	Guillotine	
Paper cutting	Full or partial	
Cutting time	500 m/s max./cycle	